

Liv Mathilde MECHIN

Liv Mathilde MECHIN

160, rue de Paris, 93100 Montreuil

T +33 (0)1 48 51 66 42 / M +33 (0)6 74 57 31 12

E livmathilde.mechin@club-internet.fr

° 22-12-1972 / French nationality

Education

2004 *International Fashion Design Post-Graduate Program / Institut Français de la Mode, Paris*

1993-1996 *DNSEP (Diplôme National Supérieur d'Expression Plastique) with honors / Ecole Nationale Supérieure d'Art, Cergy Pontoise*

1990-1992 *Ecole Régionale des Beaux-Arts de Rouen*

Preparatory classes for art schools, Paris

1989 *Baccalauréat major in Theater / Uppsala, Sweden*

Languages

Swedish: mother tongue

French, English: fluent

German: basic knowledge

Computer skills

Adobe Photoshop, X-Press, PowerPoint

Experience

1999-2003

Studio Edelkoort - Design of a prototype of a working uniform for a Japanese bread shop chain - Photo styling for audiovisual presentations at Pitti Filati (S/S 2002 F/W 2003/04) Moda Pelle as well as for the catalogue Fuzzi (knitwear brand) - Preparation of customer presentations: colour, material and iconographic research.

Costume designer for contemporary dance and theatre: Dance company "De l'Entre Deux" choreographer Daniel Dobbels: Est-ce que ce qui est loin s'éloigne de l'être humain? Tribute to Oscar Shlemmer. Design and creation of the costumes & the scenography Le Plan Mortel ; Un Temps Simple ; La veine Étreinte ; De Tous ces Temps. "L'homme Boîte" from the novel of Kobo Abé, mise en scène Mélanie Courau.

Personal achievements

La Chambre, Paris

Galerie Grey Area, Melbourne

Galerie du Jour, Paris

Agnès b. Rue Dieu, Paris

Galerie de l'Académie d'Art de Bucarest

IFM projects

bags

"Air ships": Collection of bags inspired by various timeless shapes, such as ellipses, translating their "outlines" into bags.

Prototypes made by Hermès.

SECOND SKIN: MOTIF COLLECTION

Thoughts about the "skin" as an intimate envelope... "Second skin": as a social and communicative envelope with signs and traces of time ; A motif collection directly inspired from cartographic signs and contour lines.

Prototypes made by Bleu-Forêt.

WOMEN KNITWEAR COLLECTION

Thoughts about the "knit" as soft ornamental architecture... A reflection on the shapelessness. The knit needs the body to become alive.

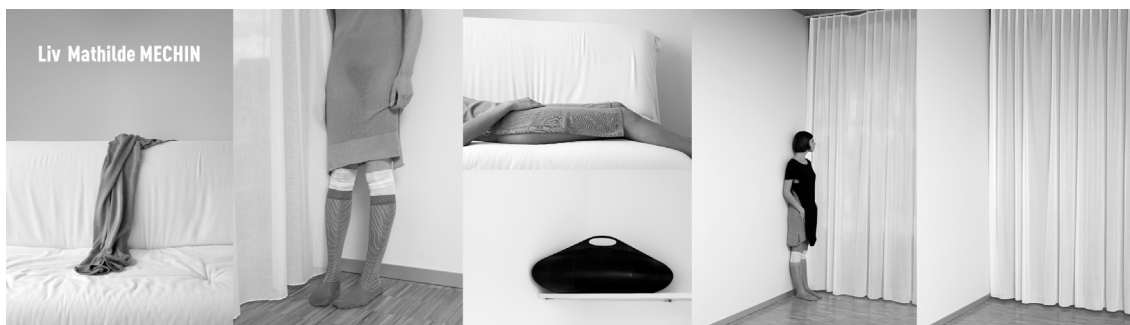
Prototypes made by Stoll France and Tricotage Mécanique du Languedoc, TML.

WORKSHOP

Tag Heuer

BRAND MANAGEMENT

Dries Van Noten



1. **Robe maille** prototype: Stoll France, fil: Filature Amalric
2. **Robe maille** Liv Mathilde Méchin, fil: Ets Robert Blondel. **Mi-bas** prototype: Tricotage des Vosges / Bleu Forêt
3. **Robe maille** prototype: Tricotage Mécanique du Languedoc
4. **Sac Zeppelin** prototype: Hermès
5. **Robe plastron et sous-robe maille** Liv Mathilde Méchin. **Mi-bas** prototype: Tricotage des Vosges / Bleu forêt

Design by Liv Mathilde Méchin / Photography by Olivier Metzger / Models Alexia & Audrey – Seven